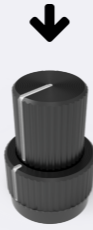


RO'VED FIRMWARE v1.2 CHEATSHEET:

NAVIGATION BETWEEN SYNTHESIS MODELS:

- Press **FREQ** to move to the previous model
- Press **TIMBRE** to move to the next model
- Press **MORPH** to move to the previous bank
- Press **HARM** to move to the next bank



FREQUENCY LOCK:

- To toggle frequency lock press **TIMBRE & MORPH** simultaneously

FIRMWARE SETTINGS MENU:

- To enter or exit the menu press

PUSH & TURN TO CHANGE ALTERNATIVE PARAMETERS:

- Push & Turn **TIMBRE** to change **LPG / VCA**
- Push & Turn **MORPH** to change internal envelope **Decay**
- Push & Turn **HARM** to change **Frequency range**



MENU NAVIGATION:

- Press **FREQ** or **TIMBRE** to navigate between menu options
- Press **MORPH** or **HARM** to change the value

